

Linear actuator

CALA 36A

Benefits

- Compact
- Lubricated for service life
- Corrosion resistant
- High operating reliability
- Selection of front attachments
- Limit switches as accessories



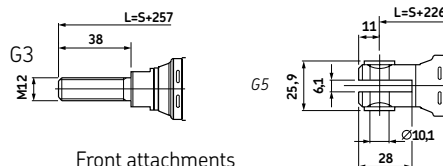
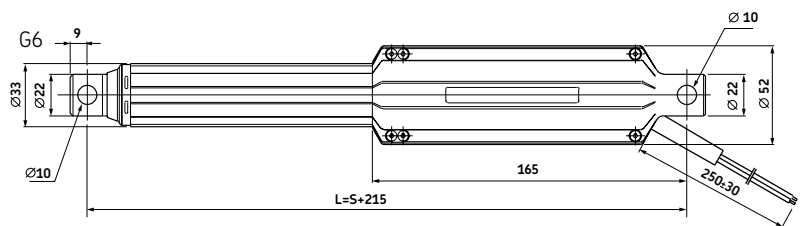
Suitable control units and accessories

	Control units					Limit switch
CALA 36A 12V						
CALA 36A 24V	•	•	•	•	•	•
CAES 31C						•
EHA3	•	•	•	•	•	
STJ	•	•	•	•	•	
STE	•	•	•	•	•	
		VCU 5	VCU 8	VCU 9	BCU 5	BCU 8
		CAED 3-24R				CAXC 33*

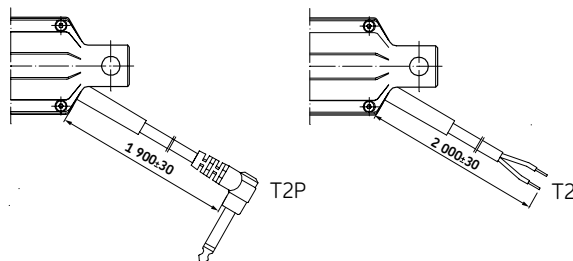
- Hand switch
- Foot switch
- Desk switch

* See page 394

Dimensional drawing



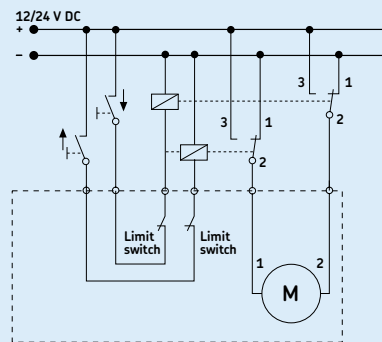
Front attachments



Rear attachments

Legend:
S = stroke
L = retracted length

Connecting diagram

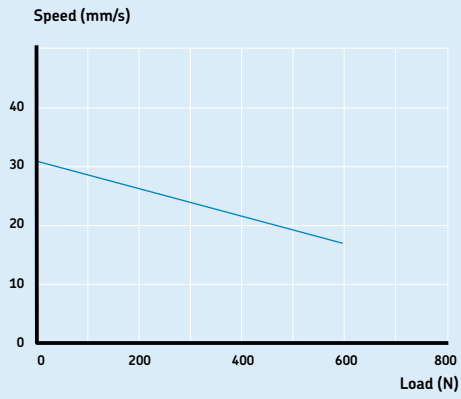


Technical data

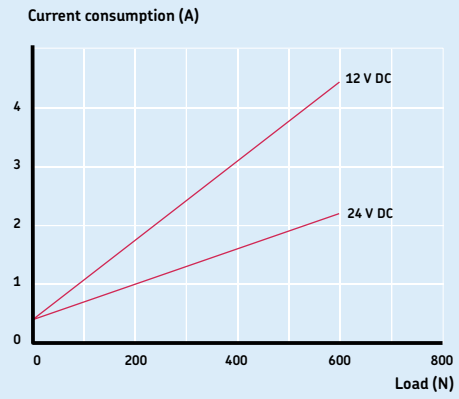
	Unit	CALA 36A
Push load	N	600
Pull load	N	600
Speed (full load to no load)	mm/s	17 to 31 ¹⁾
Stroke	mm	50 to 200
Retracted length	mm	S+215/226/257 ²⁾
Voltage	V DC	12 or 24
Power consumption	W	N/A
Current consumption 12 V DC	A	4,4
Current consumption 24 V DC	A	2,2
Duty cycle	%	5
Ambient temperature	°C	0 to +50
Type of protection	IP	44
Weight	kg	0,9 to 1,4
Color	-	Black

¹⁾ Depending on selected motor
²⁾ Dimension depends on selected front attachment

Performance diagrams

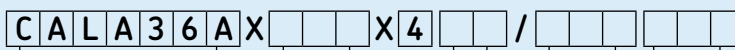


Speed-load diagram



Current-load diagram

Ordering key



Type

Stroke (S):

50 mm	050
100 mm	100
150 mm	150
200 mm	200
<i>Other stroke lengths</i>	---

Front attachment:

Male thread, M12	G3
Fork end, Ø=10,1 mm	G5
Hole, Ø=10,0 mm	G6

Voltage:

12 V DC	D12
24 V DC	D24

Cable:

Straight 0,25 m, no plug	U
Straight 1,9 m, no plug	T2
Straight 1,9 m, jack plug	T2P
Straight, 2,5 m, DIN8 plug (for BCU/VCU)	C5

Options written in italic fonts are only available on demand. Please contact SKF.

© SKF is a registered trademark of the SKF Group

© SKF Group 2009

The contents of this publication are the copyright of the publisher and may not be reproduced (even extracts) unless prior written permission is granted. Every care has been taken to ensure the accuracy of the information contained in this publication but no liability can be accepted for any loss or damage whether direct, indirect or consequential arising out of the use of the information contained herein.

Printed in Sweden on environmentally friendly paper.

PUB MT/P8 10362 EN · November 2009

